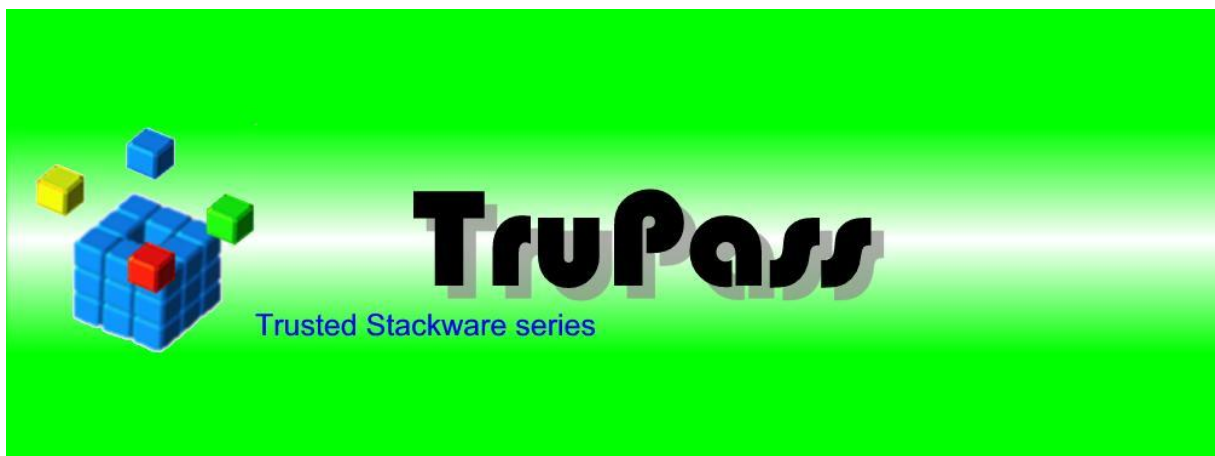


TruPass

Keyboard / Mouse operation AutoPlay application

User's Guide

Rev. 1.0.5



D.O.I-Net Co., Ltd.

Disclaimers

1. D.O.I-Net Co., Ltd. shall not take responsibility for any direct and indirect damage caused by the descriptions stated in this document or other injustices.
2. It is not intended to consent to any rights including the patent rights of any third party or our company with this document.
3. It is prohibited to reprint or reproduce some or all parts of this document without permission.
4. D.O.I-Net Co., Ltd. may change the specifications listed in this document without a notice for the purpose of improvement.

Company names and product names listed in this document are the trademarks of the companies or the registered trademarks.

When you export these products, please follow the necessary procedures by confirming the foreign exchange, foreign trade methods, and regulations such as the U.S. export control laws.

Revision History

Rev.	発行年月日	修正内容
1.0.0	2010/11/11	Issued.
1.0.1	2012/04/17	Removed Windows 2000 from Supported OSs due to a version up.
1.0.2	2013/05/10	Added Windows 8, Windows Server 2012 to Supported OSs. Changed Trial Period.
1.0.3	2014/12/04	Modified descriptions of Supported OSs.
1.0.4	2015/07/22	Added Windows 10 to Supported OSs.
1.0.5	2023/11/07	Changed Supported OSs.

Index

1. Introduction.....	8
2. Operating Conditions	8
a. Supported OSs	8
b. Operational Requirements	8
3. Product Summary	8
a. Product Features	8
b. Package.....	8
i. Single License Edition	8
ii. Volume License Edition	8
4. Warnings	9
5. Installation and Uninstallation Procedure	9
a. Installation.....	9
b. Uninstallation	12
6. Operation Method	13
a. TruPass Manager	13
i. Launch TruPass Manager.....	13
1) License Verification	14
ii. Auto-Run TruPass Manager	15
iii. End TruPass Manager	16
iv. Journal Recording.....	16
1) Example of Recording a Journal for Password Dialog Box.....	19
2) Example of Recording a Journal for Web Service Password	20
v. Play Back Test of Journal	21
vi. Auto-Play Back Journal.....	23
1) Without Combined Use of TruGate	23
2) With Combined Use of TruGate	23
vii. Play Back Journal	24
viii. Delete Journal	26
ix. Stop/Resume TruPass Manager.....	29
1) Stop	29
2) Resume	29
x. Configuration.....	30
1) Journal Storage.....	31
(a) Local Settings	31
(b) Flash Disk	31
2) Authentication.....	31

3) Player Recognition Rate	31
4) Delay at Play Back Test	32
5) Delay at Normal Operation	32
6) Enable Functions	32
7) Compatibility	32
xi. Show Version Info.	32
b. License Registration	33
i. Launch License Registration Utility	33

Figure Index

Figure 1 Setup Wizard Welcome Dialog Box.....	9
Figure 2 SOFTWARE LICENSE AGREEMENT	10
Figure 3 Setup Type Selection Dialog Box	10
Figure 4 Ready to Install Dialog Box	11
Figure 5 Installation Indicator Dialog Box	11
Figure 6 Installation Complete Dialog Box.....	12
Figure 7 Apps and Features Dialog Box.....	12
Figure 8 Confirmation of Program Uninstallation Dialog Box	13
Figure 9 Uninstall Indicator Dialog Box.....	13
Figure 10 Launch TruPass Manager	14
Figure 11 Trial Period Message	14
Figure 12 Trial Period Expired Warning Message	15
Figure 13 TruPass Manager Task Try Icon	15
Figure 14 TruPass Manager Task Try Icon - at stop.....	15
Figure 15 TruPass Manager Exit Menu	16
Figure 16 Journal Recording Menu	17
Figure 17 TruPass Recorder - Launch.....	17
Figure 18 TruPass Recorder - select window	17
Figure 19 TruPass Recorder - recording journal	18
Figure 20 TruPass Recorder - end of recording	18
Figure 21 TruPass Recorder - cancel recording.....	18
Figure 22 TruPass Recorder - cancelled	19
Figure 23 Journal Recording Example - 1	20
Figure 24 Journal Recording Example - 2	21
Figure 25 TruPass Recorder - end of recording	21
Figure 26 TruPass Recorder - start play back test	22
Figure 27 TruPass Recorder - cancel play back test.....	22
Figure 28 TruPass Recorder - play back test is cancelled	22
Figure 29 TruPass Recorder - end of journal play back test	23
Figure 30 TruPass Manager Authentication Dialog Box.....	23
Figure 31 Select Authentication Device Dialog Box	24
Figure 32 TruPass Manager Unauthorized Message.....	24
Figure 33 Journal Play back Menu	25
Figure 34 TruPass Player - launch	25
Figure 35 TruPass Player - playing back.....	26
Figure 36 TruPass Player - exit.....	26

Figure 37 Delete Journal Menu.....	27
Figure 38 TruPass File Manager - launch.....	27
Figure 39 Delete All Journal Files	28
Figure 40 Confirm of deleting all journal files	28
Figure 41 TruPass File Manager - exit.....	28
Figure 42 TruPass Manager Stop Menu.....	29
Figure 43 TruPass Manager Resume Menu.....	30
Figure 44 TruPass Manager Configuration Menu.....	30
Figure 45 TruPass Manager Configuration - launch.....	31
Figure 46 TruPass Manager Version Menu	32
Figure 47 TruPass Manager Version Information	33
Figure 48 Launch TruPass License Registration Utility	33
Figure 49 TruPass License Registration Dialog Box	34
Figure 50 Message of Completion for License Registration.....	34

1. Introduction

This User's Guide explains the operation of TruPass and its Configuration utility (TruPass Manager) produced by D.O.I-Net Co., Ltd. (D.O.I-Net).

2. Operating Conditions

a. Supported OSs

Windows 10 32bit/64bit

Windows 11

Windows Server 2016

Windows Server 2019

b. Operational Requirements

Each dialog box or window to which TruPass is applied must have a unique name.

3. Product Summary

a. Product Features

TruPass plays back the pre-recorded operation of mouse and keyboard (Journal) when the registered dialog or window pops up. You can use TruPass to automatically fill in your ID and Password for any applications.

[Note: It is possible for the Play Back Journal to authenticate users with authentication devices such as biometrics if you also use TruGate produced by D.O.I-Net. Further, if TruLog Service is used as well, authentication log data will be kept.](#)

b. Package

2 types of installer packages are prepared; one for PCs with a single license edition, and another for PCs with a volume license edition.

i. Single License Edition

This is a package mainly for personal users. It comes with the exe installer package. The trial period is 1 month. No restrictions are set during the trial period.

ii. Volume License Edition

This is a package mainly for corporate users. It comes with the msi installer package. You cannot uninstall it from "Apps and Features" of the OS installed on the PC. Uninstall it from "Active Directory server" or "re-launched msi installer". Either 32bit version or 64bit version is available. The trial period is 3 months. No restrictions are

set during the trial period.

4. Warnings

1. Cannot co-exist with other products that operate the window automatically.
2. Impossible to play back 32 bit Journal on 64 bit edition and vice versa.
3. Cannot work with 32 bit application window on 64 bit OS.
4. Never install a 32bit edition and a 64bit edition together on the same PC.
5. Never install a single license edition and a volume license edition together on the same PC.

5. Installation and Uninstallation Procedure

Note: In installing and uninstalling, please log on with the administrator privilege of the local computer.

a. Installation

A dialog box shown below appears when you execute TruPass Trusted Stackware Auto Fill-in Manager.exe. Click the "Next" button.

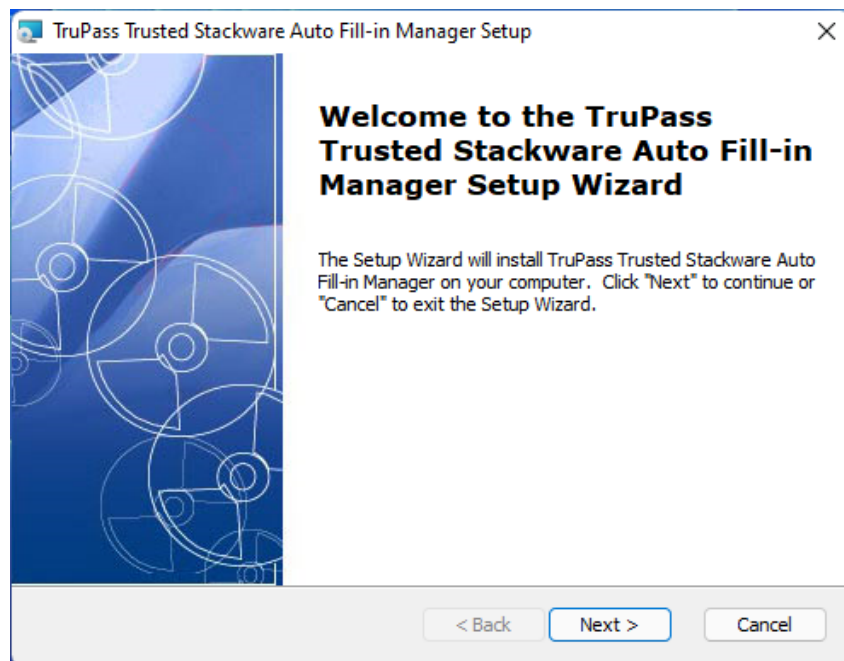


Figure 1 Setup Wizard Welcome Dialog Box

Read "SOFTWARE LICENSE AGREEMENT" shown in the dialog box carefully, and click the "I accept the terms in the license agreement" radio button if you agree, then click the

"Next" button.

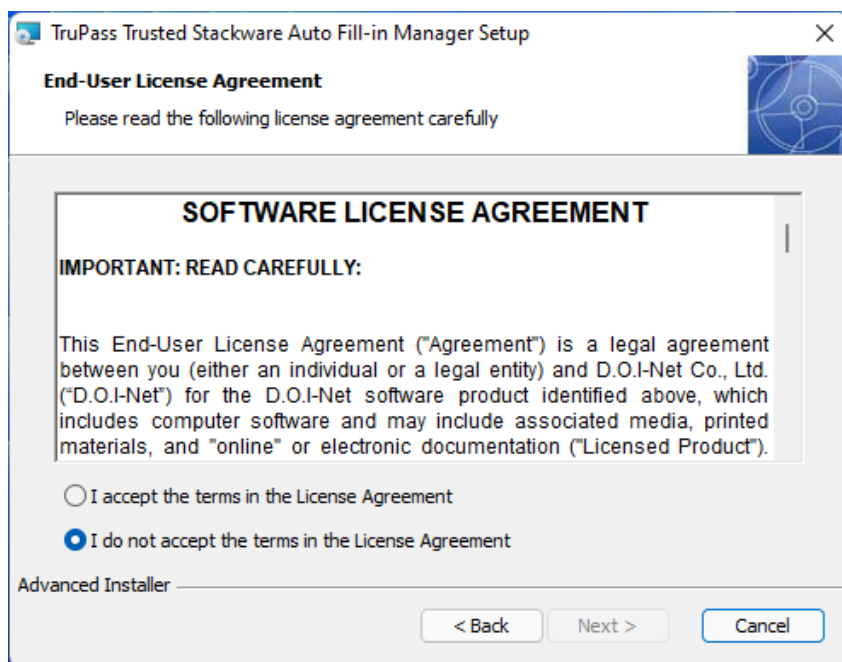


Figure 2 SOFTWARE LICENSE AGREEMENT

When the Setup Type dialog box is displayed, select the setup type according to your usage environment.

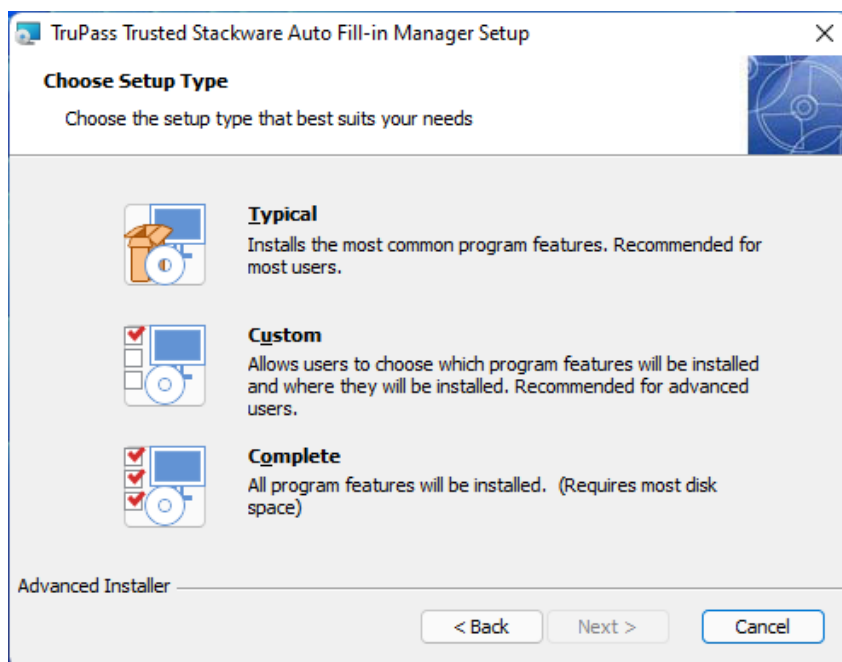


Figure 3 Setup Type Selection Dialog Box

Click the "Install" button unless you need to change. If you need to make some changes, click the "Back" button and return to the dialog box where you want to make changes.

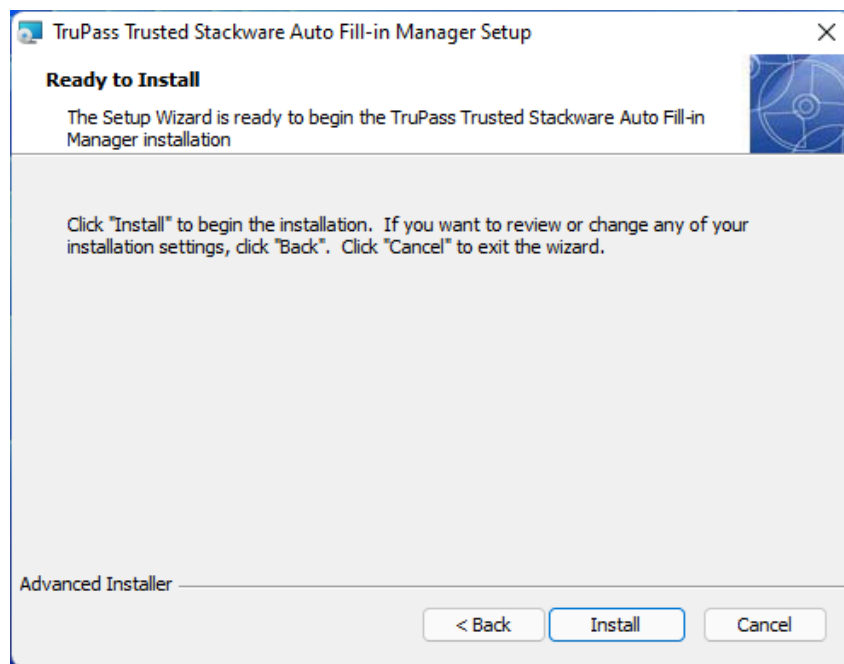


Figure 4 Ready to Install Dialog Box

During installation, the following indicator dialog box will be displayed.

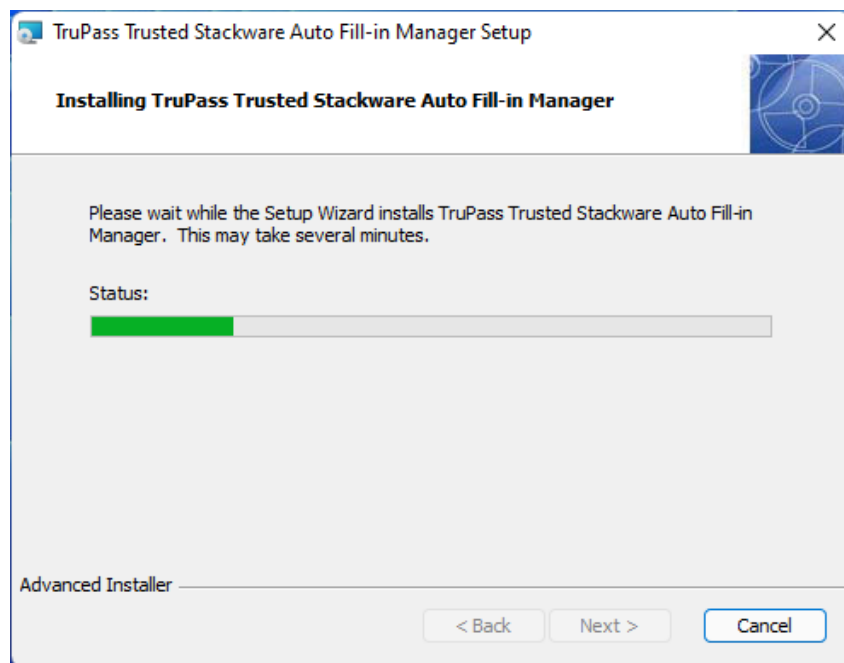


Figure 5 Installation Indicator Dialog Box

When installation is finished, the following installation completion dialog will be displayed. Click the "Finish" button.

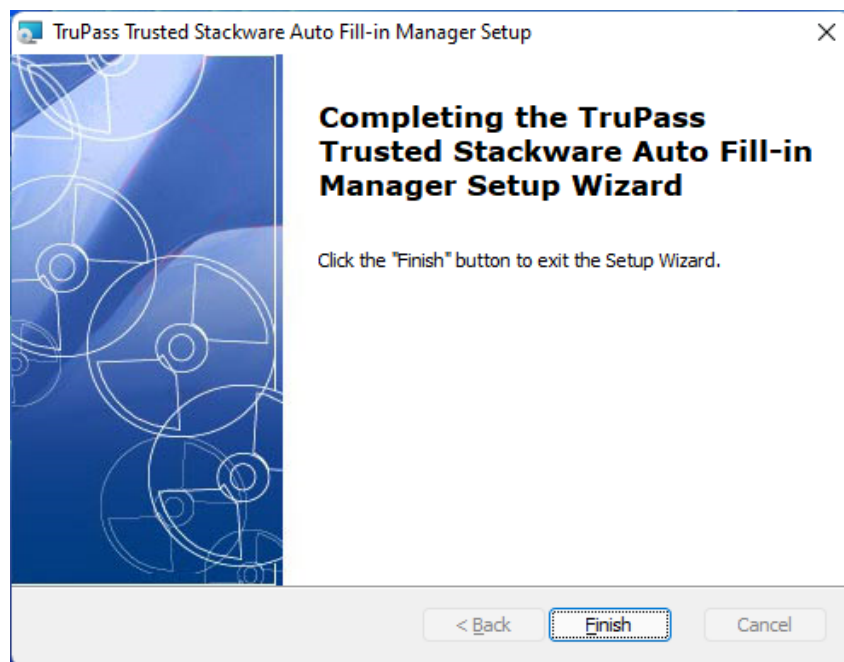


Figure 6 Installation Complete Dialog Box

b. Uninstallation

Select "TruPass Trusted Stackware Auto Fill-in Manager" from "Apps and Features" of the OS.

The following is an operation example with Windows 11.

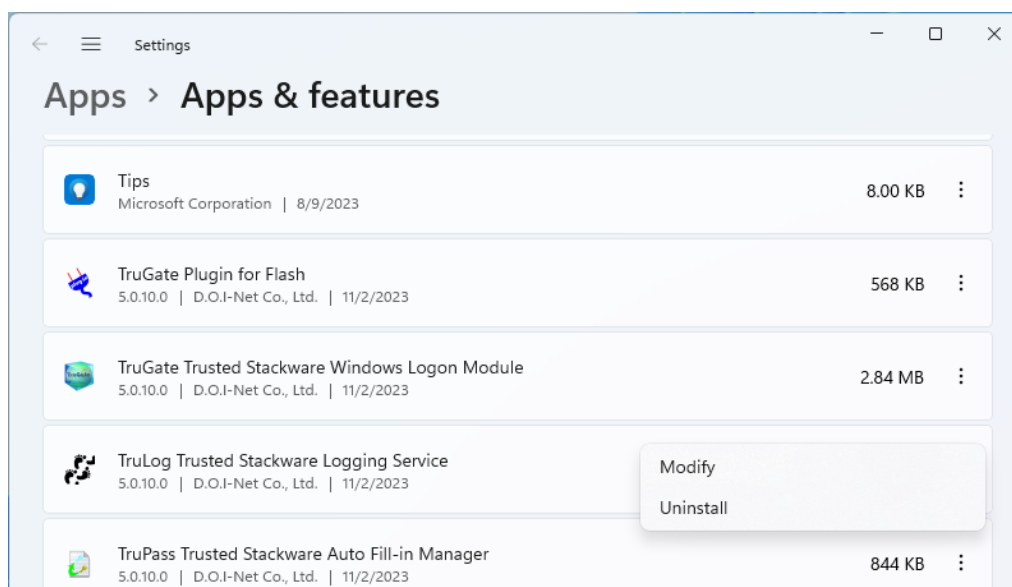


Figure 7 Apps and Features Dialog Box

Then click "Uninstall", and uninstall TruPass following the message.

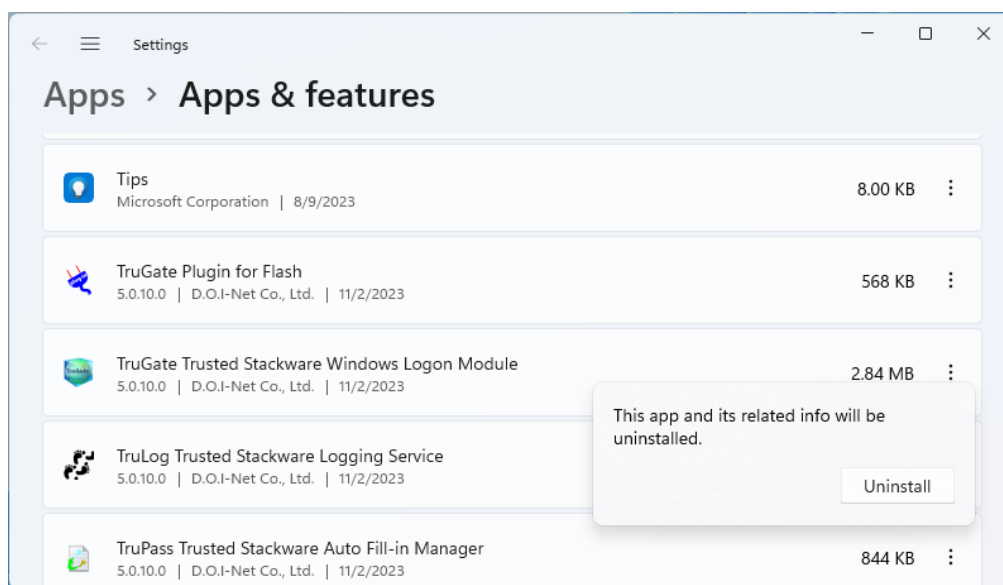


Figure 8 Confirmation of Program Uninstallation Dialog Box

During uninstallation, the following indicator dialog box will be displayed.

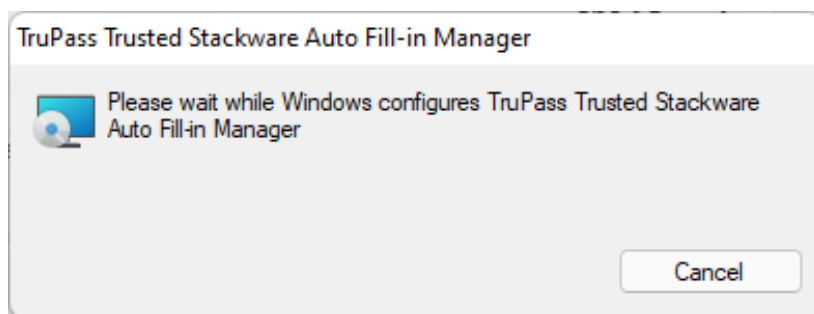


Figure 9 Uninstall Indicator Dialog Box

When uninstallation is completed, the indicator dialog box will disappear.

6. Operation Method

a. TruPass Manager

i. Launch TruPass Manager

Click in the order of “Start” – “All Apps” – “TruStack” – “TruPass Manager”.

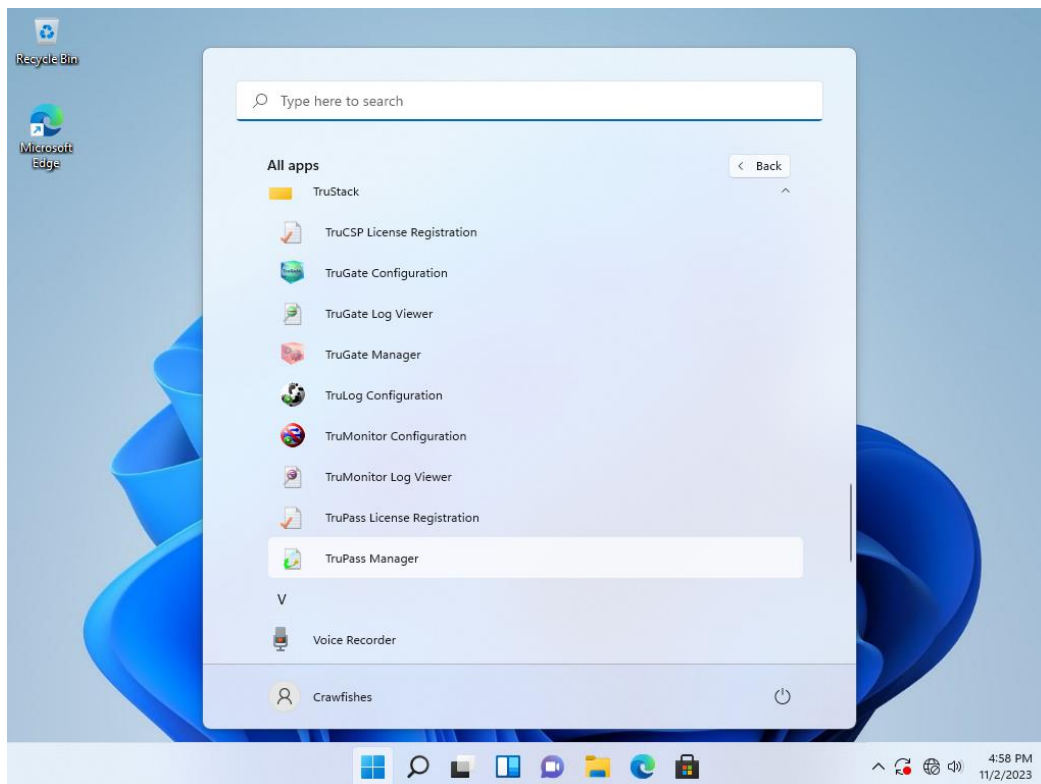


Figure 10 Launch TruPass Manager

1) License Verification

The following popup message will be displayed during the trial period. If the message is shown, click the “OK” button.

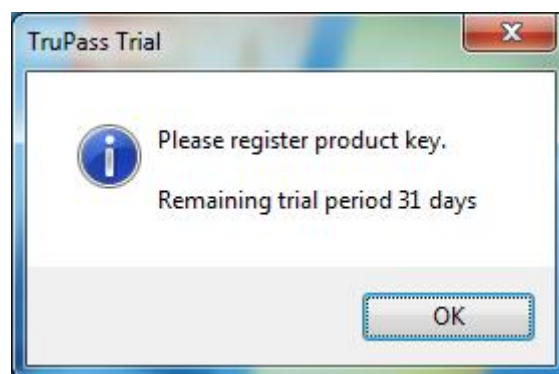


Figure 11 Trial Period Message

Note: Trial period is 1 moth for the single license edition, and 3 months for the volume license edition. You cannot use TruPass after the trial period expires. Please register the product key to use TruPass continuously.

When the trial period is over, the dialog box as follows will be displayed. To keep using it, enter the product key in the edit box, then click the “OK” button. To

terminate the trial, click the “Cancel” button, and uninstall TruPass.

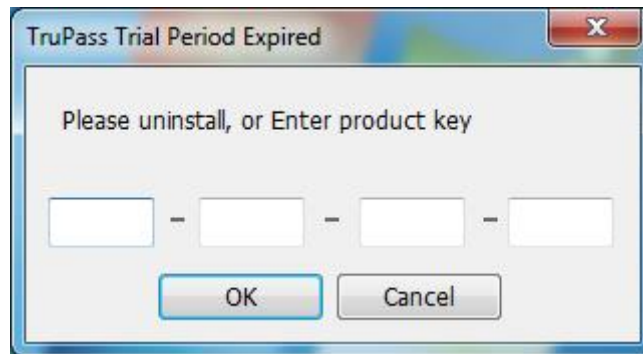


Figure 12 Trial Period Expired Warning Message

ii. Auto-Run TruPass Manager

After TruPass is installed, TruPass Manager will be launched at Windows Logon, and TruPass Manager Icon will be displayed on the task tray as follows.

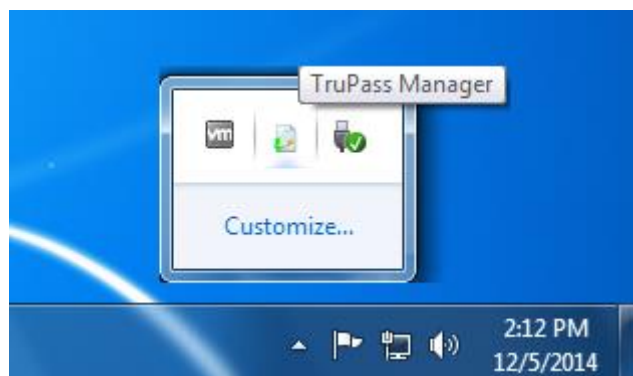


Figure 13 TruPass Manager Task Try Icon

If the Auto-Play back Journal is stopped, a red stop mark is shown on TruPass Manager Icon.

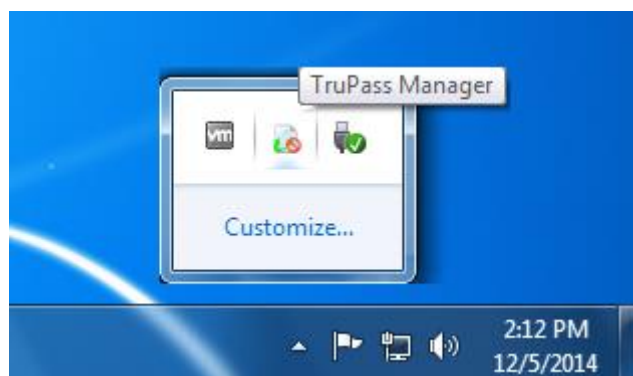


Figure 14 TruPass Manager Task Try Icon - at stop

If you want to re-launch TruPass Manager after once you ended the program, follow

the Launch TruPass Manager section above. When it is normally launched, an icon will be displayed on the task tray as displayed at Windows Logon.

iii. End TruPass Manager

To terminate TruPass Manager, click the right mouse button on TruPass Manager Icon on the task tray. Then, the following menu will be popped up, select “Exit” and click the left mouse button.

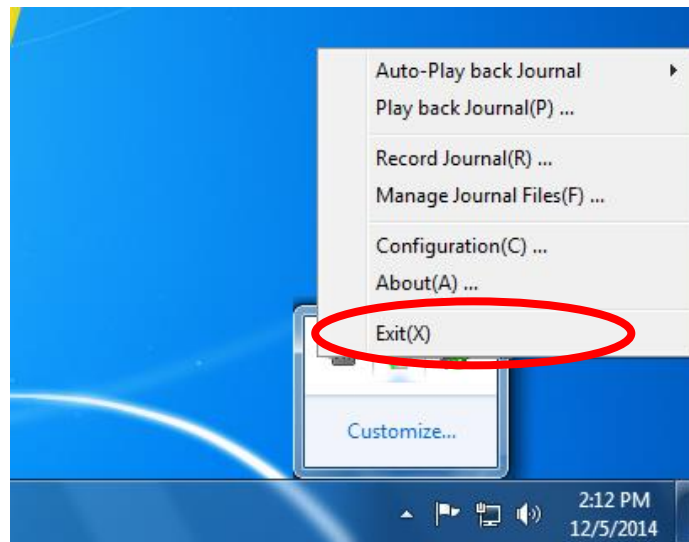


Figure 15 TruPass Manager Exit Menu

iv. Journal Recording

First, launch the target application which you want to record the journal, and then show the ID/Password Input dialog box.

Next, click the right mouse button on TruPass Manager Icon on the task tray. Then, the following menu will be popped up, select “Record Journal” and click the left mouse button.

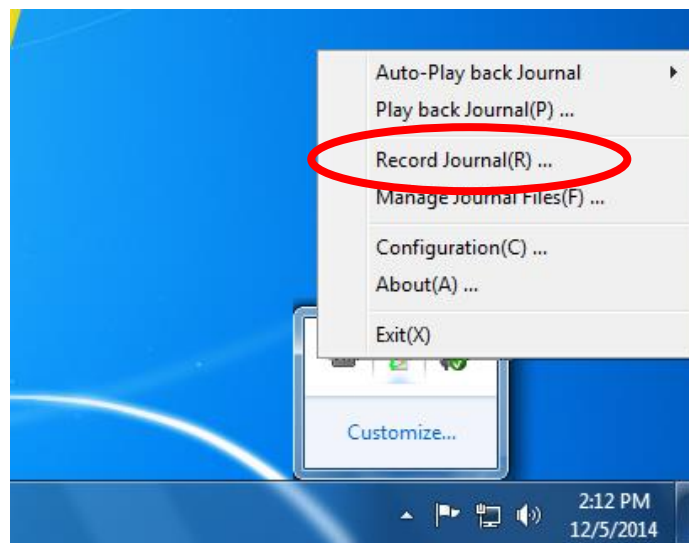


Figure 16 Journal Recording Menu

When the TruPass Recorder dialog box is shown as below, click the “Start Rec.” button.

Note: Journal will be created and managed for each Windows log on user.

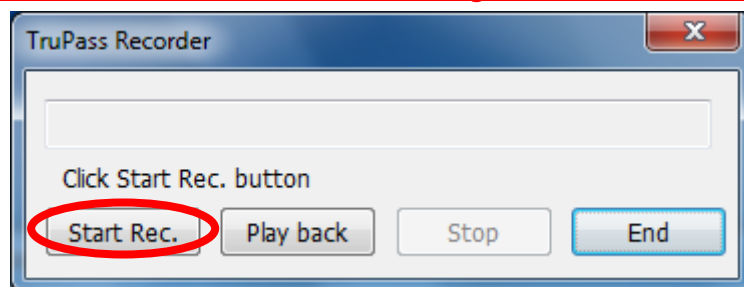


Figure 17 TruPass Recorder - Launch

The window frame color under the mouse cursor will get changed after the “Start Rec.” button is clicked. Move the mouse cursor to the window title of the target application which you want to record the journal, and then click. Then, the window frame color will be back.

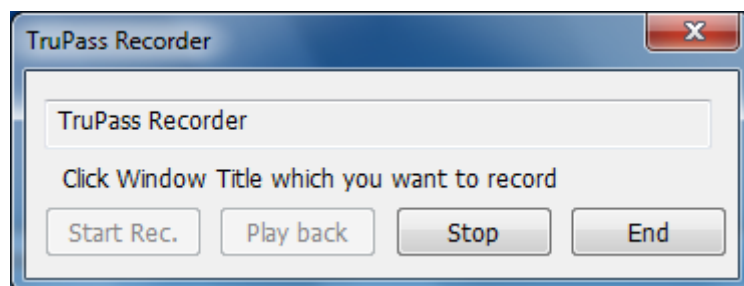


Figure 18 TruPass Recorder - select window

If the journal recording is started, the message on the TruPass Recorder dialog box will be changed as below. Press Ctrl+Break keys when you finish recording.

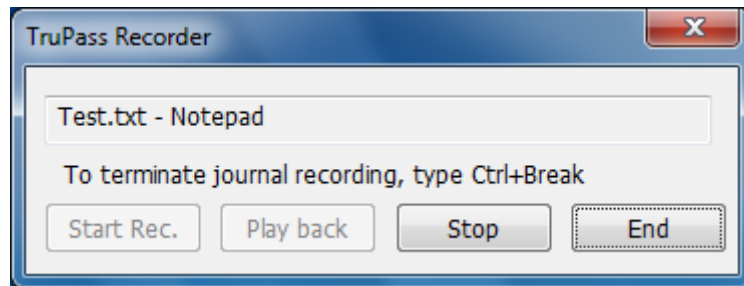


Figure 19 TruPass Recorder - recording journal

When the journal recording is completed, the message on the TruPass Recorder dialog box will be changed as below. Verify whether the recorded journal is correct or not. If you cannot play back the journal, try to record the journal again.

Note: Please refer to the following Play Back Test of Journal section for more details.

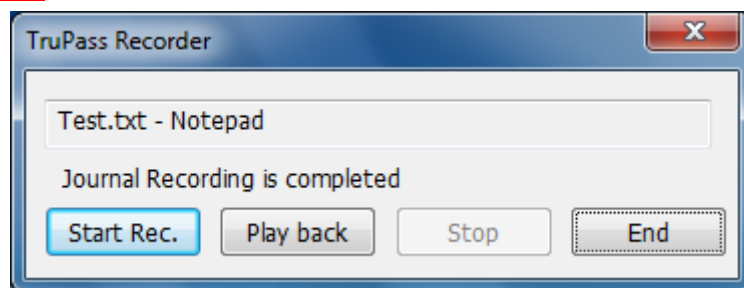


Figure 20 TruPass Recorder - end of recording

If the "Stop" button on the TruPass Recorder dialog box is clicked while recording the journal, the message on the TruPass Recorder dialog box will be changed as below. To retry recording the journal, click the "Stop" button again.

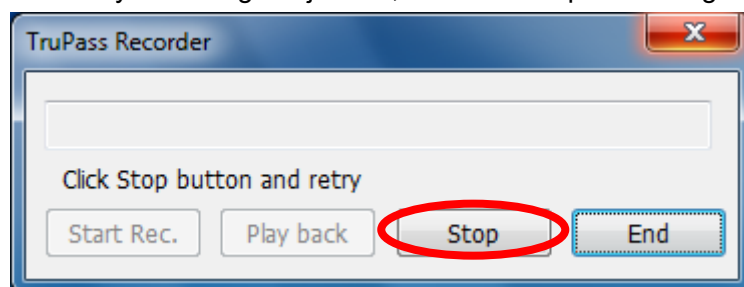


Figure 21 TruPass Recorder - cancel recording

Once the "Stop" button is clicked, the message on the TruPass Recorder dialog box will be changed as below. To retry recording the journal, click the "Start Rec" button and follow from the first.

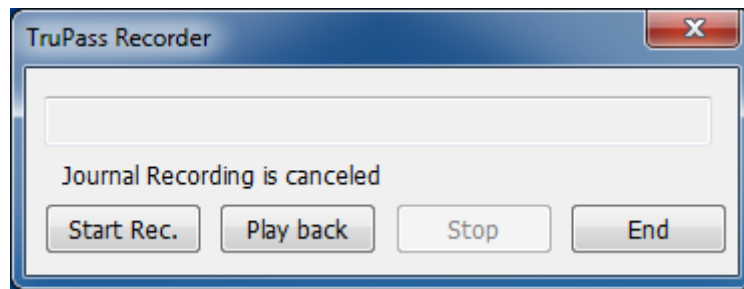


Figure 22 TruPass Recorder - cancelled

Note: If the Caps Lock was ON (or OFF) at the beginning of recording a journal, and a journal was recorded with that condition, then when it is played back with the Caps Lock being OFF (or ON), the uppercase letters will become the lower case letters and vice versa. Therefore, please keep the Caps Lock state as the same at the recording and playing back.

1) Example of Recording a Journal for Password Dialog Box

Below shows an example of recording the journal for the username and password input in the case of accessing to the network drive.

This example will be a reference for such situation: 1) the password Input window size is not changed; 2) the cullet is in the edit box when the window is displayed; 3) the cullet is focused.

Steps:

- ① Click the “Start Rec” button on the TruPass Recorder dialog box.
- ② Move the mouse cursor to the target window title.
- ③ Click on the title to determine the window which you record.
- ④ Move the mouse to the upper left corner of the window, then, click to mark the starting point.

Note: In this example, after here, we do not use the mouse until the completion except the cancellation.

- ⑤ Enter the user name in the “User Name” combo box.
- ⑥ Press Tab key to move the cullet to the “Password” edit box.
- ⑦ Enter the password in the “Password” edit box.
- ⑧ Press Tab key to move the focus to the “Remember my credentials” check box.
- ⑨ Press Tab key to move the focus to the “OK” button.
- ⑩ Press Space key on the “OK” button.
- ⑪ If it is successfully connected to the network drive, press Ctrl+Break keys to finish recording.

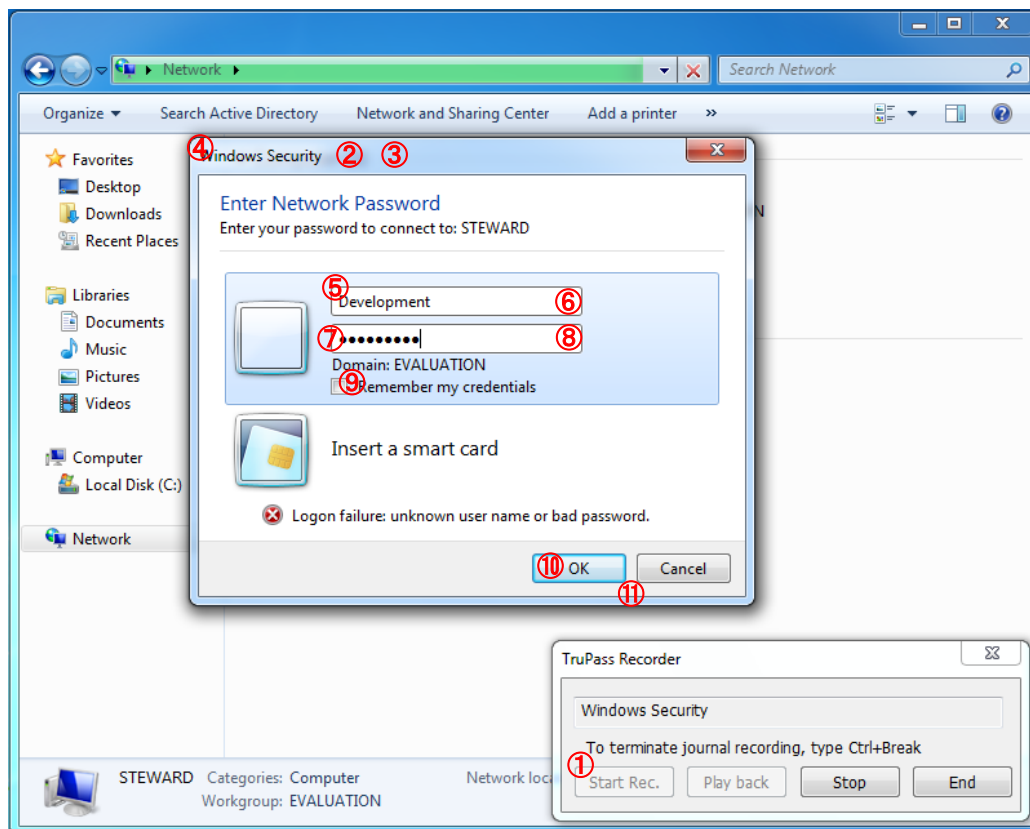


Figure 23 Journal Recording Example - 1

2) Example of Recording a Journal for Web Service Password

Below shows an example of recording the journal for the password input in the case of accessing to the web service.

This example will be a reference for such situation: 1) the password Input window size might be changed; 2) the cullet position is not fixed; 3) the focus position is not fixed.

Steps:

- ① Click the "Start Rec" button on the TruPass Recorder dialog box.
- ② Move the mouse cursor to the target window title.
- ③ Click on the title to determine the window which you record.
- ④ Move the mouse to the upper left corner of the window, then, click to mark the starting point.
- ⑤ Move the mouse to the blank position where even if the window size gets changed, then, click to mark the starting point for the key input.
- ⑥ Press Tab key to move the cullet to the "User Name" edit box.
- ⑦ Enter the user name in the "User Name" edit box.
- ⑧ Press Tab key to move the cullet to the "Password" edit box.

- ⑨ Enter the password in the “Password” edit box.
- ⑩ Press Tab key to move the focus to the “Login” button.
- ⑪ Press Space key on the “Login” button.
- ⑫ If it is successfully connected to the web service, press Ctrl+Break keys to finish recording.

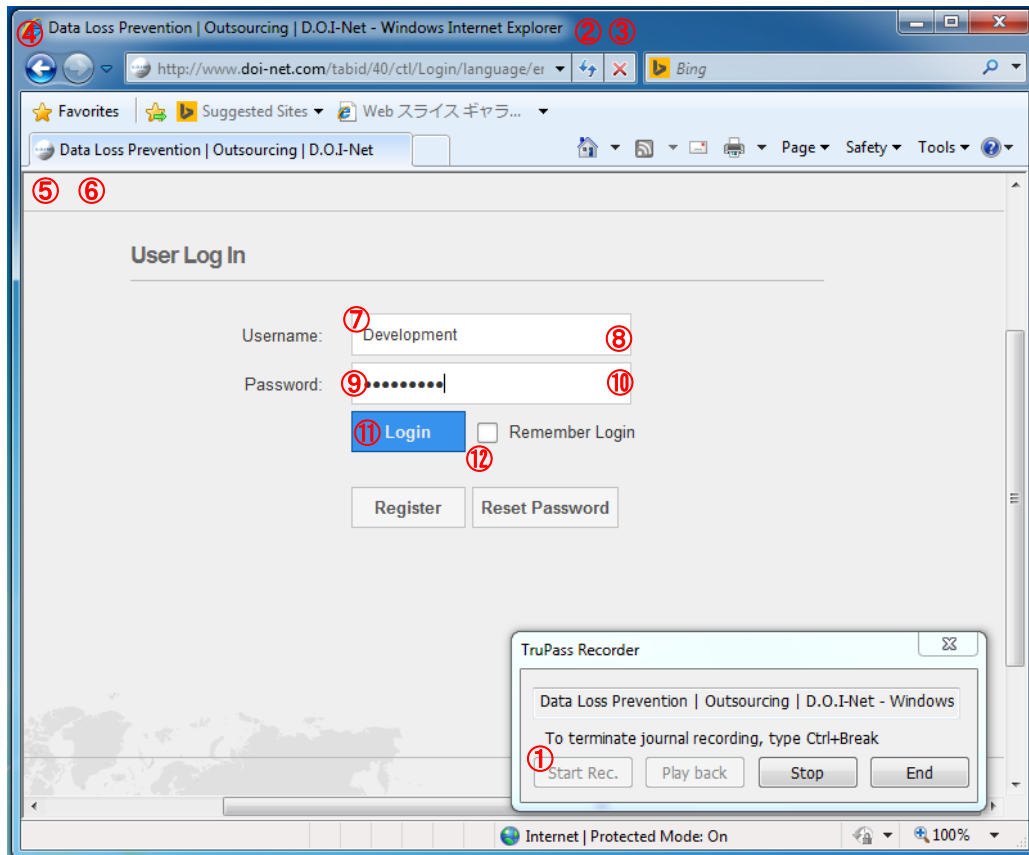


Figure 24 Journal Recording Example - 2

v. Play Back Test of Journal

With TruPass Recorder is running; launch the target application which you want to test the journal.

Next, click the “Play back” button on the TruPass Recorder dialog box.

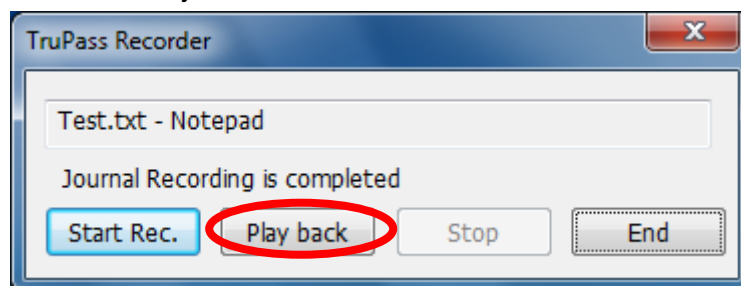


Figure 25 TruPass Recorder - end of recording

The window frame color under the mouse cursor will get changed after the “Play back” button is clicked. Move the mouse cursor to the window title of the target application which you want to test the journal, and then click. Then, the window frame color will be back.

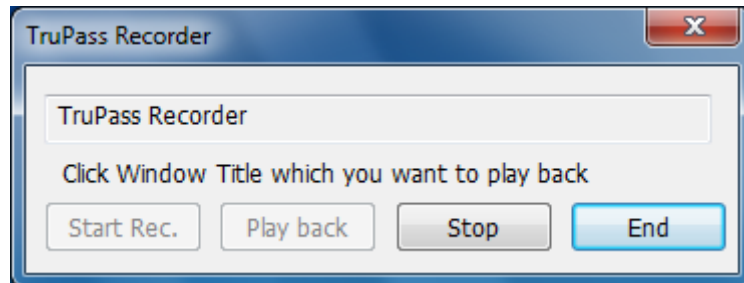


Figure 26 TruPass Recorder - start play back test

If the “Stop” button on the TruPass Recorder dialog box is clicked while testing the journal, the message on the TruPass Recorder dialog box will be changed as below. To retry testing the journal, click the “Stop” button again.

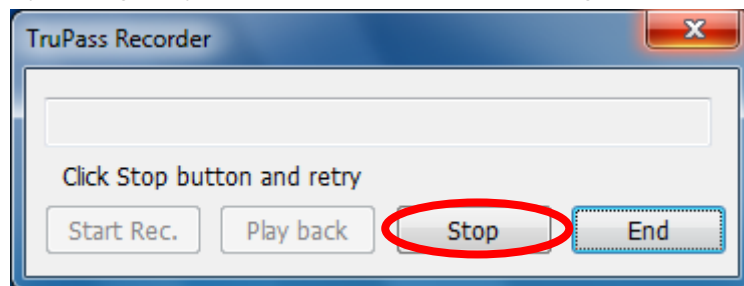


Figure 27 TruPass Recorder - cancel play back test

Once the “Stop” button is clicked, the message on the TruPass Recorder dialog box will be changed as below. To retry testing the journal, click the “Play back” button and follow from the first.

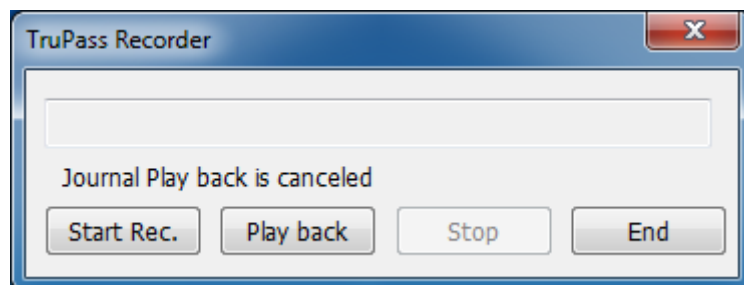


Figure 28 TruPass Recorder - play back test is cancelled

When the journal testing is completed, the message on the TruPass Recorder dialog box will be changed as below. If the play back is completed normally, click the “End” button to finish TruPass Recorder. If you cannot play back the journal, try to record

the journal again.

Note: There will be a possibility that the journal is not played back well at actual auto-play, even though it could be played back at play back test. In this case, please record a journal again while devising mouse operation and keyboard operation.

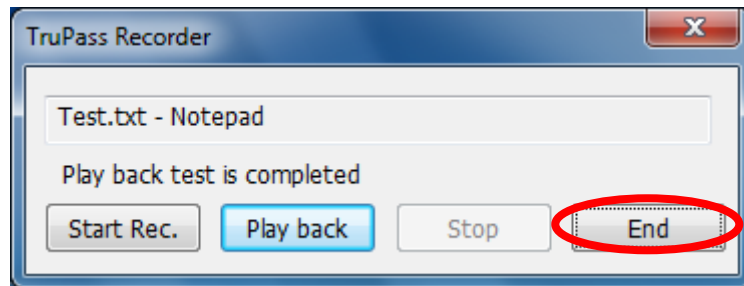


Figure 29 TruPass Recorder - end of journal play back test

vi. Auto-Play Back Journal

1) Without Combined Use of TruGate

With TruPass Manager is running, when the password input window of the registered journal is displayed, the journal is automatically played back.

2) With Combined Use of TruGate

With TruPass Manager is running, when the password input window of the registered journal is displayed, the following authentication dialog box will be displayed.

Click the "OK" button, and any of the device authentication dialog box will be displayed, then perform the device authentication. If the device authentication is successful, the journal is automatically played back.

Note: If you have logged on to Windows by a Well Known User name, such as Administrator, the device authentication dialog box will not be displayed. Also, the device authentication dialog box may not be displayed depending on the device.

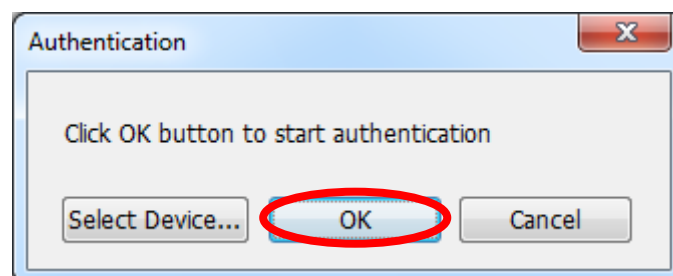


Figure 30 TruPass Manager Authentication Dialog Box

When the "Select Device..." button is clicked, the Select Authentication Device

dialog box as follows will be displayed. If you need to use other authentication device than the default authentication device which is used at Windows Logon, select your preferred authentication device from the “Device Name” drop down list, then click the “OK” button. After that, click the “OK” button on the authentication dialog box.

Note: Please refer to the device plug-in user’s guide for the details of device configuration.

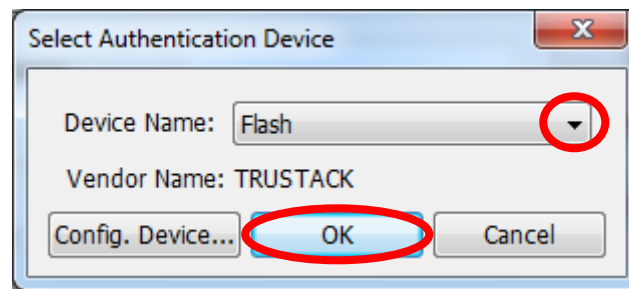


Figure 31 Select Authentication Device Dialog Box

When the “Cancel” button is clicked or failed the device authentication, the Non-authentication dialog box as follows will be displayed. If this dialog box is displayed, click the “OK” button. In this case, the journal will not be auto-played back, therefore enter the ID/Password by the keyboard.

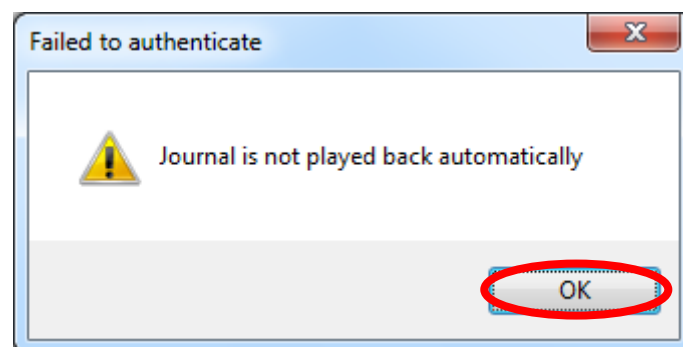


Figure 32 TruPass Manager Unauthorized Message

vii. Play Back Journal

Click the right mouse button on TruPass Manager Icon on the task tray. Then, the following menu will be popped up, select “Play back Journal” and click the left mouse button.

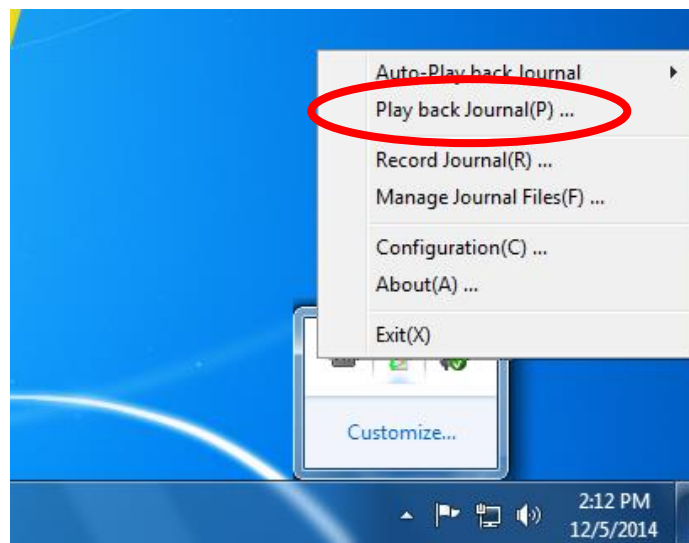


Figure 33 Journal Play back Menu

Then, the TruPass Player dialog box as follows will be displayed. Click the “Play back” button or the journal name which you want to play back.

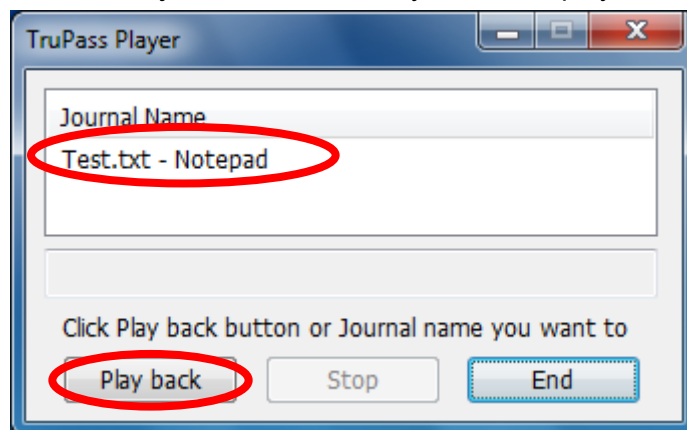


Figure 34 TruPass Player - launch

When the message of the TruPass Player dialog box is changed as below; click the window title bar of the play back target. Then, the recorded journal will be played back as same as the auto-play back mentioned above.

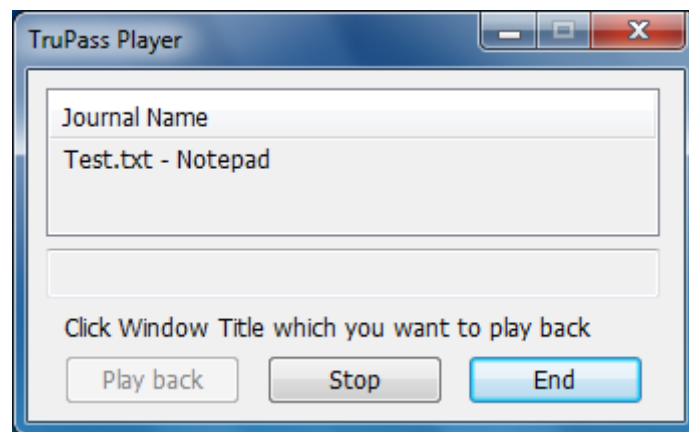


Figure 35 TruPass Player - playing back

If the play back of the journal is completed, click the “End” button to finish TruPass Player.

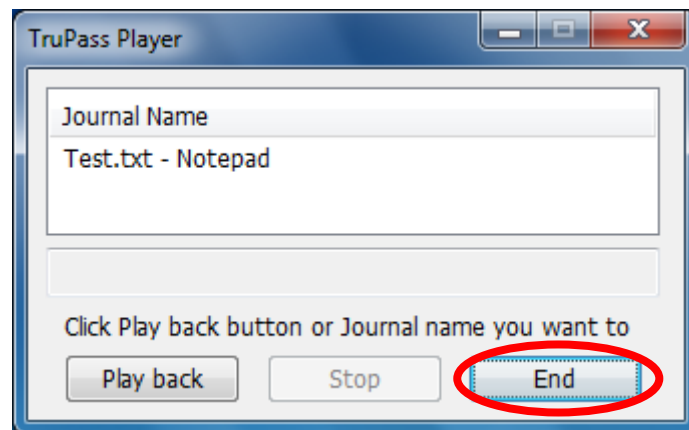


Figure 36 TruPass Player - exit

viii. Delete Journal

Click the right mouse button on TruPass Manager Icon on the task tray. Then, the following menu will be popped up, select “Manage Journal Files” and click the left mouse button.

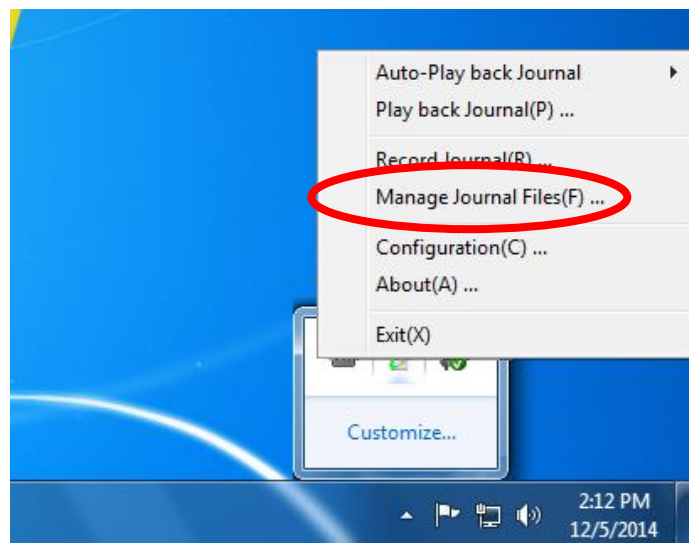


Figure 37 Delete Journal Menu

Then, the TruPass File Manager dialog box as follows will be displayed. To delete the journal individually, double click on the target journal name (window title name at recording the journal).

Note: Journal will be created and managed for each Windows log on user.

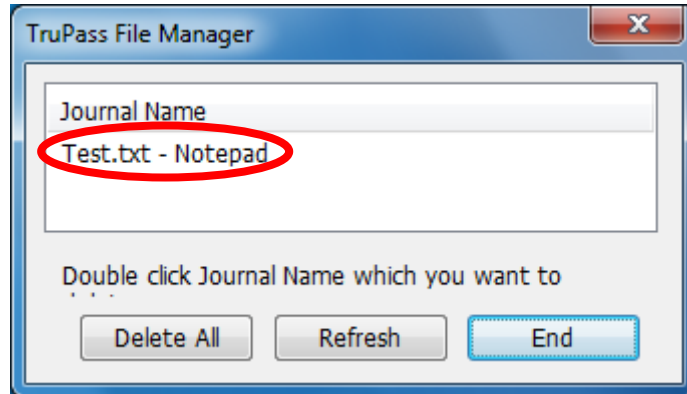


Figure 38 TruPass File Manager - launch

In order to delete all of the journals, click the “Delete All” button.

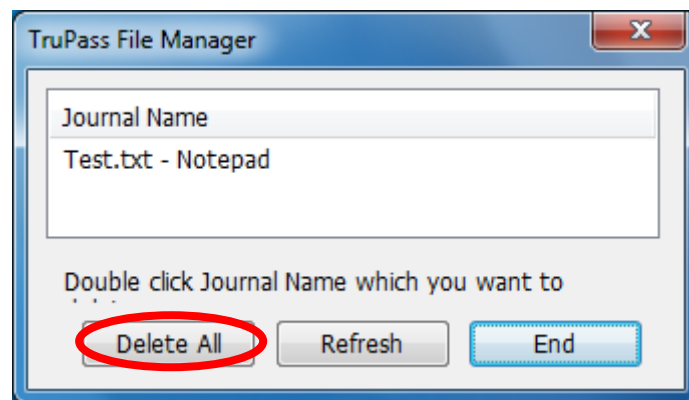


Figure 39 Delete All Journal Files

A confirmation message like below will be displayed. Click the “Yes” button when you really want to do so.

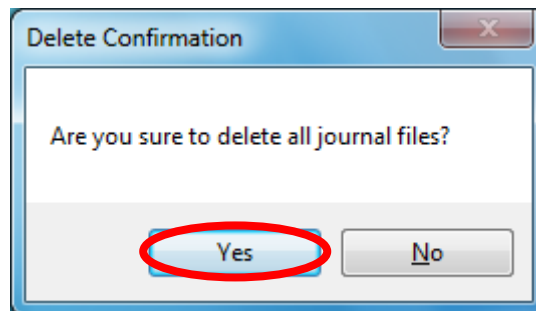


Figure 40 Confirm of deleting all journal files

When the journal deleting is completed, click the “End” button to exit TruPass File Manager.

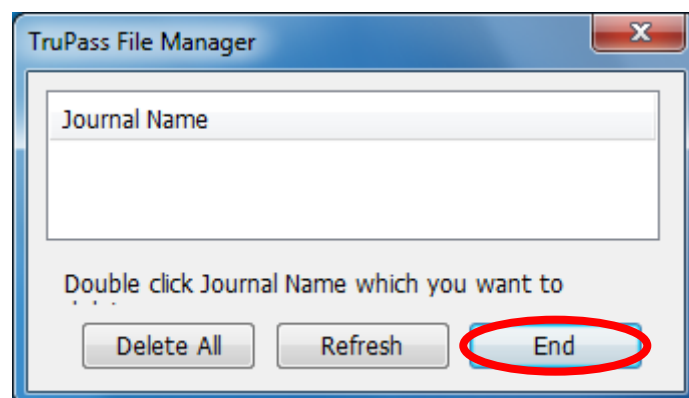


Figure 41 TruPass File Manager - exit

ix. Stop/Resume TruPass Manager

1) Stop

Click the right mouse button on TruPass Manager Icon on the task tray. Then, the following menu will be popped up, select “Auto-Play back Journal” - “Stop” and click the left mouse button.

Note: Auto-Play back is suspended while the TruPass Manager is stopping. In addition, TruPass Manager will be launched in a stop state at the next boot if TruPass Manager is terminated with a stop state.

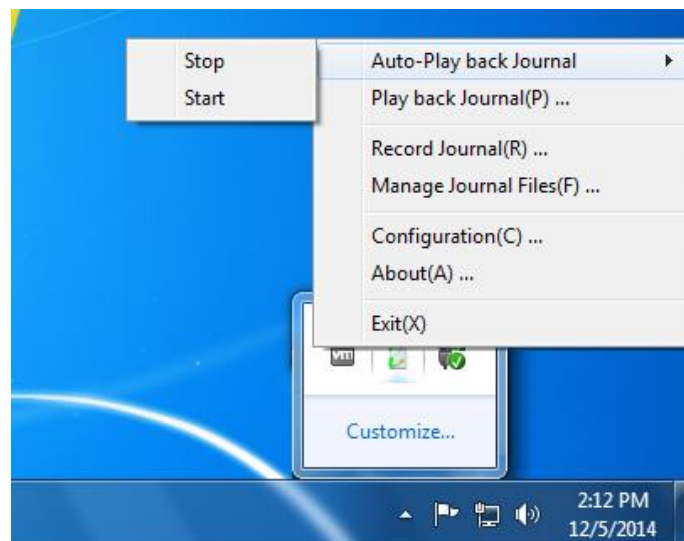


Figure 42 TruPass Manager Stop Menu

2) Resume

Click the right mouse button on TruPass Manager Icon on the task tray. Then, the following menu will be popped up, select “Auto-Play back Journal” - “Start” and click the left mouse button.

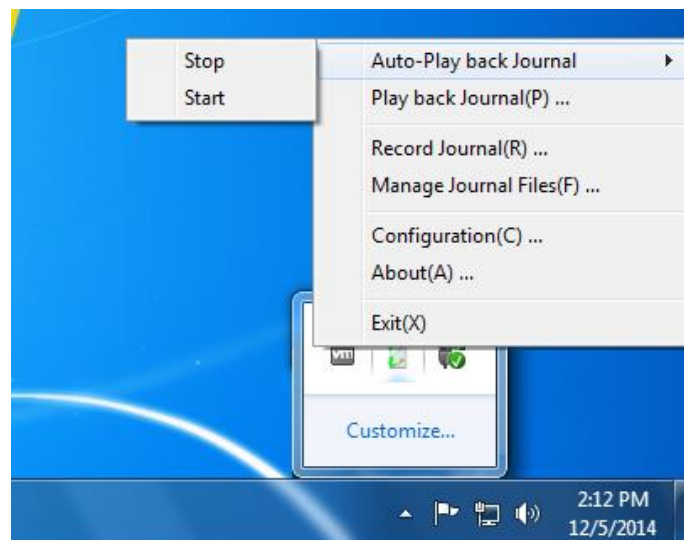


Figure 43 TruPass Manager Resume Menu

x. Configuration

Click the right mouse button on TruPass Manager Icon on the task tray. Then, the following menu will be popped up, select “Configuration” and click the left mouse button.

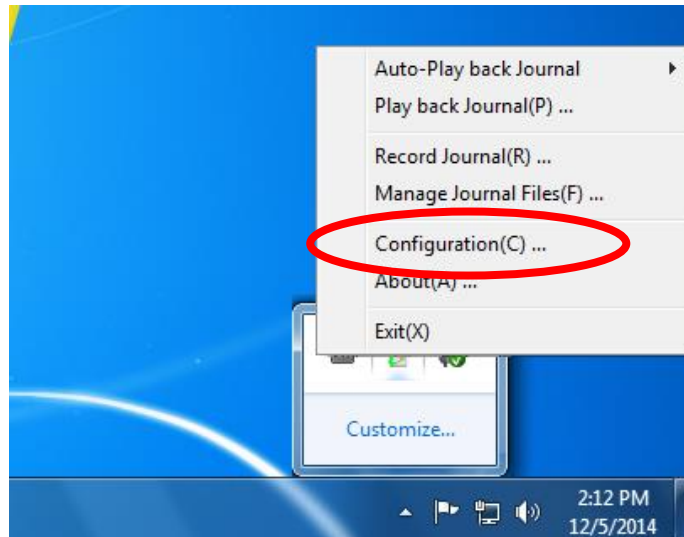


Figure 44 TruPass Manager Configuration Menu

Then, the TruPass Manager Configuration dialog box as follows will be displayed.

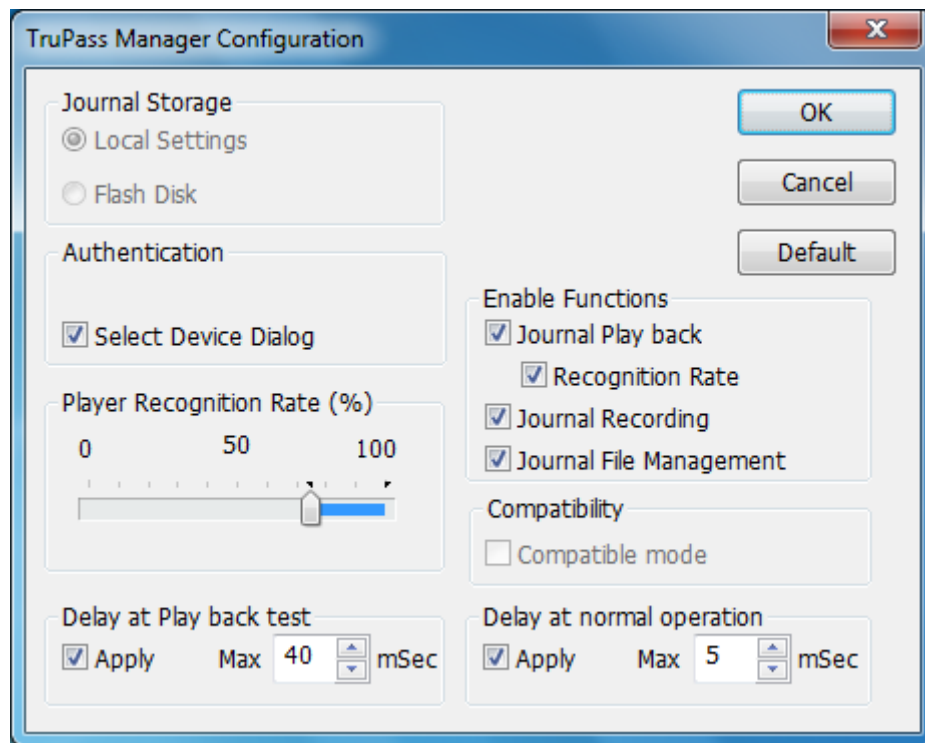


Figure 45 TruPass Manager Configuration - launch

1) Journal Storage

Assign the storage place for the journal.

(a) Local Settings

The journal will be created in the profile area of the local hard disk.
(Default)

(b) Flash Disk

The journal will be created in the flash disk. This option will be available when the Generic USB Flash Memory Device Plug-in is used.

2) Authentication

It determines whether the Select Device Dialog is shown or not at the journal play back. This option will be available when TruGate is used.

3) Player Recognition Rate

For the similar title (the first half of the title is the same) of windows, by decreasing the recognition rate, TruPass will be able to recognize them as the same at playing back the journal.

Note: Be caution there will be a possibility that the security gets weak if you decrease the recognition rate since such as the password will be shown due to wrong recognition of window.

4) Delay at Play Back Test

Set the play back speed for the test of journal recording. There will be a possibility that the characters are missed depending on the PC performance. Therefore, modify this value according to your PC performance.

5) Delay at Normal Operation

Set the play back speed for the actual journal play back. There will be a possibility that the characters are missed depending on the PC performance. Therefore, modify this value according to your PC performance.

6) Enable Functions

Configure whether each function is enable and changeable by TruPass Manager.

7) Compatibility

Set TruPass whether it uses the journal format compatible with version 2.0 and before.

Note: Compatibility mode is not available for Windows Vista and above.

xi. Show Version Info.

Click the right mouse button on TruPass Manager Icon on the task tray. Then, the following menu will be popped up, select "About" and click the left mouse button.

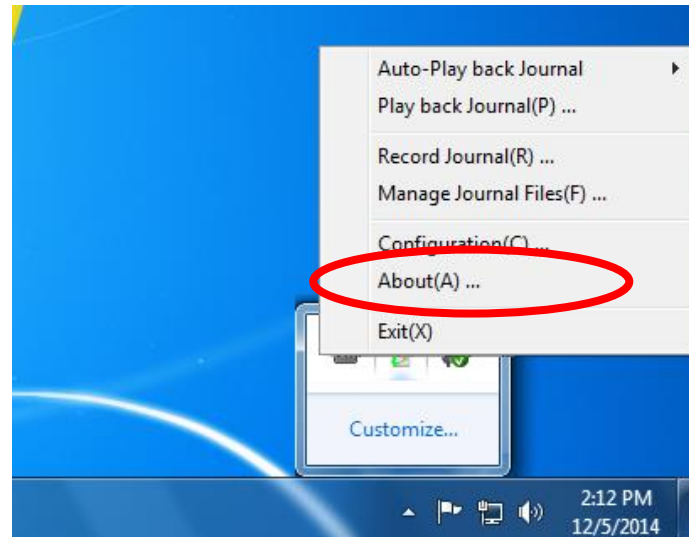


Figure 46 TruPass Manager Version Menu

Then, the TruPass Manager Version Information dialog box as follows will be displayed.

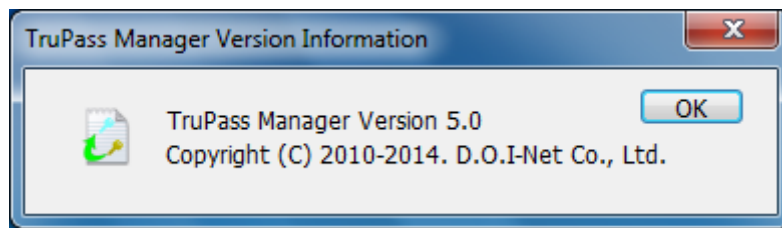


Figure 47 TruPass Manager Version Information

b. License Registration

i. Launch License Registration Utility

Note: Please log on with the administrator privilege of the local computer to operate the License Registration Utility.

Click in the order of “Start” – “All Apps” – “TruStack” – “TruPass License Registration”.

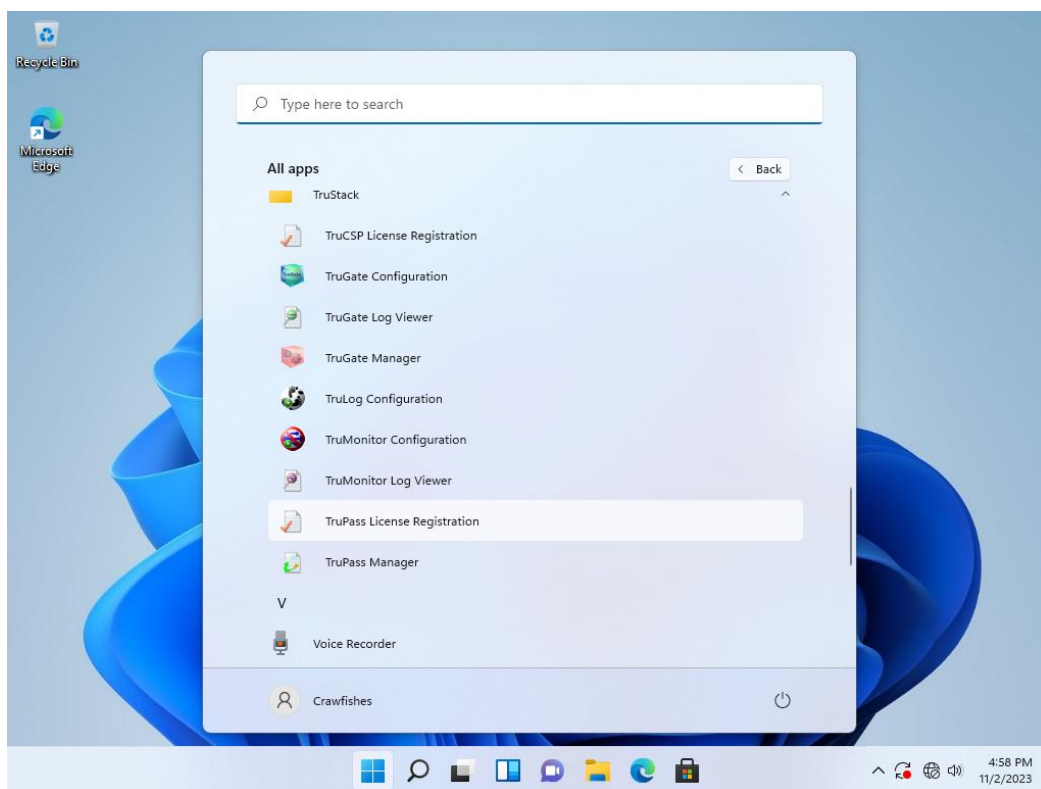


Figure 48 Launch TruPass License Registration Utility

When License Registration dialog box appears, click the “OK” button after entering the product key you obtained separately in the edit box. If the “Cancel” button is clicked, the license registration will be cancelled.



Figure 49 TruPass License Registration Dialog Box

If the verification of product key is successfully done, and the registration is normally complete, the following dialog box will be displayed.

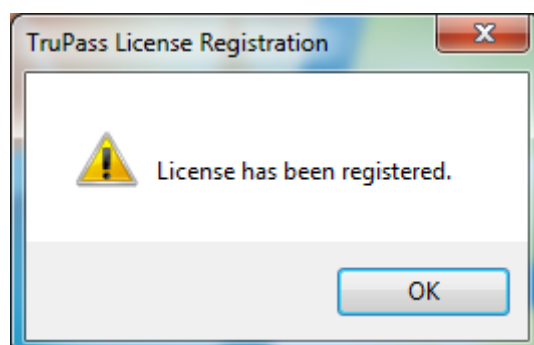


Figure 50 Message of Completion for License Registration

End of Document

Questions to Trusted Stackware series product

D.O.I-Net Co., Ltd.

Zip Code: 190-0011

2-25-23 Takamatsu, Tachikawa, Tokyo JAPAN

E-Mail: info@doi-net.com

URL: <https://www.doi-net.com/>